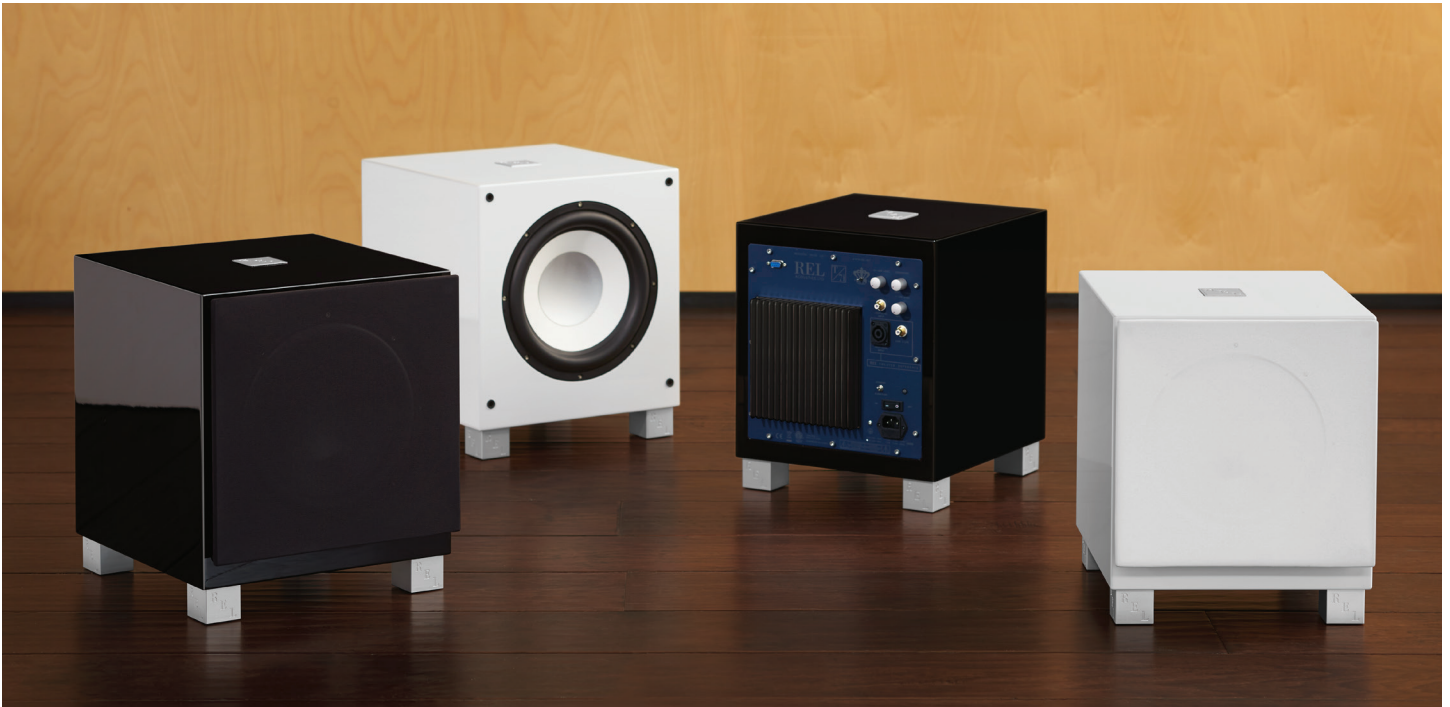




SERIE Ti



PLEASE DON'T CALL THEM ENTRY LEVEL

A relentless drive to improve is at the very core of REL. Many companies would have been content to leave well enough alone with our best-selling Serie T, but with our next generation Serie Ti, REL have yet again improved the breed.

REL have yet again improved upon its bass drivers, cabinets and filter technology whilst making possible the thoughtful integration of (optional) in room super fast Aero™ wireless.

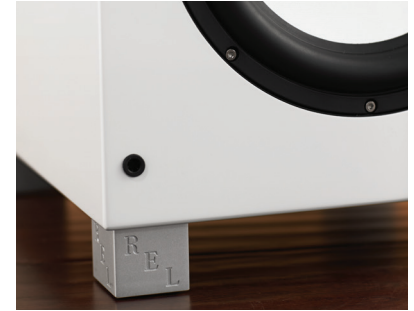
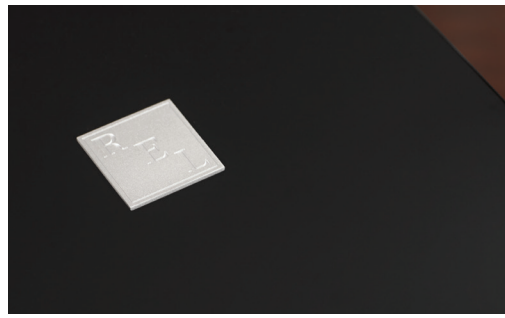
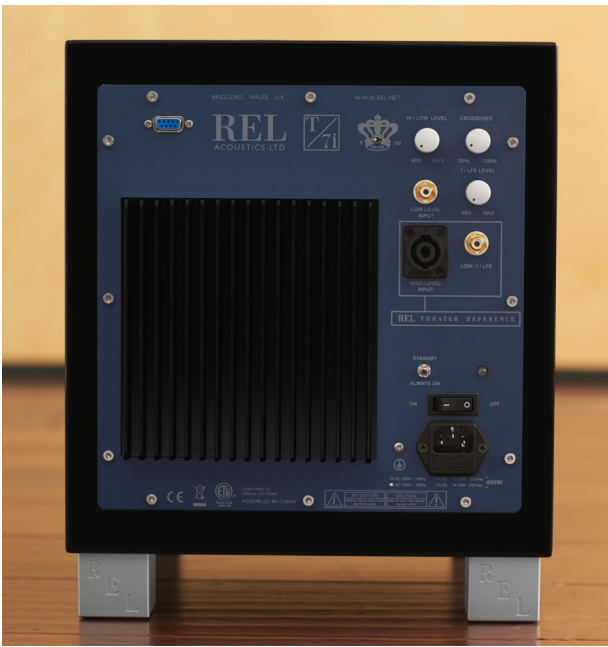
A large thin, alloy center damper provides greatly improved cone stiffness while actually reducing weight. The result is fresh, crisp, faster bass that slams harder, punches deeper yet retains all of REL's trademarked musicality. Theater performance improves hugely, along with greater clarity and speed in music. This improvement in drivers permits realignment of the active driver to the front baffle, with the passive driver now residing on the bottom. Most engineering teams would stop there, but careful listening determined the identical improvement to the passive radiator made a difference that possibly exceeded the update to the main driver.

Extra energy created by the lighter, high energy drivers requires improvements to our cabinets. This led to an extra 8% greater cabinet volume. This volume allows even deeper bass to emerge from Ti, but the design team accomplished this by adding all-but-invisible depth; keeping Ti a lean, elegant design with just a hint more formality than before.

Aero™ is an outgrowth of research learnt developing the costly LongBow™ wireless architecture. Using newer, less expensive chips the REL team are now able to offer wireless transmission rates similar to our industry-leading LongBow at substantial cost savings. REL still does it right; Aero delivers the same zero compression, great sound and a good blend with the main speakers and only about 20 milliseconds of latency at the same price the other guys ask for compressed, slow sounding conventional wireless add-ons.

Ti, because not breaking the bank is *not* the same thing as being cheap.

Join the Pursuit™
rel.net



T/9i SPECIFICATIONS

T/7i SPECIFICATIONS

T/5i SPECIFICATIONS

Type	Passive Radiator, front-firing active woofer, down-firing passive radiator	Passive Radiator, front-firing active woofer, down-firing passive radiator	Closed Box, down-firing active woofer
Active Drive Unit	10in., 254 mm long-throw, inverted dust cap, steel chassis	8in., 200 mm long-throw, inverted dust cap, steel chassis	8in., 200 mm long-throw, inverted dust cap, steel chassis
Passive Radiator	10in., 254 mm	10in., 254 mm	10in., 254 mm
Lower Frequency Response	28 Hz at -6 dB in room	30 Hz at -6 dB in room	32 Hz at -6 dB in room
Input Connectors	Hi Level Neutrik Speakon, Lo Level single phono, LFE phono	Hi Level Neutrik Speakon, Lo Level single phono, LFE phono	Hi Level Neutrik Speakon, Lo Level single phono, LFE phono
Input Impedance:	High Level: 150k, Low Level: 10k, .1/LFE: 10k ohms	High Level: 150k, Low Level: 10k, .1/LFE: 10k ohms	High Level: 150k, Low Level: 10k, .1/LFE: 10k ohms
Gain Control Range	80 dB	80 dB	80 dB
Power Output	300 Watts (RMS)	200 Watts (RMS)	125 Watts (RMS)
Phase Switch	Yes, 0 or 180 degrees	Yes, 0 or 180 degrees	Yes, 0 or 180 degrees
Amplifier Type	Class AB	Class AB	Class AB

Protection System

Fully Electronic SET-SAFE	Yes	Yes	Yes
D.C. Fault	Yes	Yes	Yes
Output Short	Yes	Yes	Yes
Mains Input Voltage	220-240 volts, 110-120 volts for certain markets	220-240 volts, 110-120 volts for certain markets	220-240 volts, 110-120 volts for certain markets
Fuses	3.15 Amp semi delay 230 volts operation 6.3 Amp semi delay 115 volts operation	3.15 Amp semi delay 230 volts operation 6.3 Amp semi delay 115 volts operation	1.6 Amp semi delay 230 volts operation 3.15 Amp semi delay 115 volts operation

Dimensions

W x H x D, Including Feet and Rear Panel Controls	13 x 15.2 x 16 in., (330 x 387 x 407 mm) Including Feet and Rear Panel Controls Add 1.75 in (44.5 mm) in depth when using Hi Level connector	12 x 14.3 x 15 in., (305 x 362 x 382 mm) Including Feet and Rear Panel Controls	10.5 x 12.5 x 12.7 in., (267 x 317 x 322 mm) Including Feet and Rear Panel Controls
Net Weight	41.3 lbs. (18.7 kg)	36 lbs. (16.3 kg)	26.5 lbs. (12 kg)
Finish	Gloss Piano Black or White Lacquer	Gloss Piano Black or White Lacquer	Gloss Piano Black or White Lacquer

Supplied Accessories

Mains Lead	Yes	Yes	Yes
Neutrik Speakon Interconnect	Yes (10 Meters Nominal)	Yes (10 Meters Nominal)	Yes (10 Meters Nominal)
Users Manual	Yes	Yes	Yes

In the interest of product development, REL Acoustics Limited reserves the right to vary these specifications without notice.